



Theft delay arm tube for Tempo roadworks traffic light

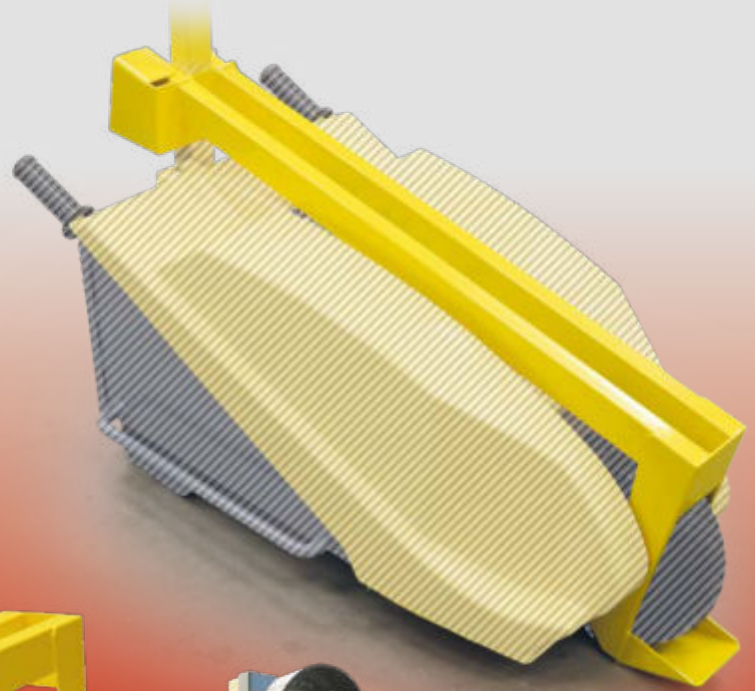
REF : 47110



Made in France

« The theft retardant arm improves the theft and vandalism resistance of the Tempo construction site traffic light.

The locking device itself is protected by 3mm steel plate returns, adding a second level of security. »



- Protects the battery compartment (double bar).
- Protects against the movement of fire (clog).
- Reinforced security around the padlock.
- RAL 1023.



Theft delay arm tube for Tempo roadworks traffic light
REF : 47110

Protects the battery box:

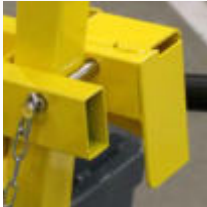
The double bar arm covers the cover of the battery box, preventing it from opening and theft of the battery.

The arm is made of 30/10 steel to which a layer of powder-coated paint is applied.


Protects the traffic light:

The arm traps the front wheel, preventing the Tempo traffic light from rolling like a wheelbarrow and thus making it difficult to move.

The load curve is selected using an external switch.


Protected padlock:

The padlock is protected by a 3 mm steel "U" reducing its exposure to vandalism.

TECHNICAL INFORMATIONS

Matter	Powder-coated steel
Color	RAL 1023 approved
Size (L x l x h)	962 x 98 x 502 mm
Weight	6,5 Kg

ASSOCIATED PRODUCTS


→ **21698**
Jeu de 2 feux tricolores
de chantier Tempo



→ **41186**
Protection cage for
Tempo box



→ **12257**
Padlock



→ **1992**
Battery 12 V 100 Ah



→ **26758**
Charger for batteries
from 12 V / 8 A / 96 W