



Rechargeable battery 12 V 200 Ah range • integrated acid
REF : 376

« This lead-acid battery has a capacity of 200 Ah* at a voltage of 12 V.

The acid is built into the battery.

The battery has two handles that make it easy to transport. »



TECHNICAL INFORMATION

Power supply*	12 V
Capacity*	200 Ah
Protection	IP 65
Size* (L x l x h)	515 x 272 x 235 mm
Weight*	44 Kg

(*) Technical data varies depending on production.

ASSOCIATED PRODUCTS



➔ 21551

Charger for batteries
12 V / 25 A / 300 W

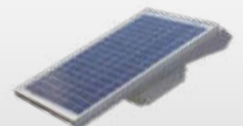


➔ 22377

Mobile battery case



Public lighting source
case



Solar power kit